



Introducing the
Amazing

FLARE Q⁺



The World Famous
Flare Just Got Quieter
and Brighter!

Featuring Flare Q⁺ LED Driver
and Cooling Technology™!
Delivers an amazing maximum
output of 52,000 Lumens – 1.4
times the brightness of the
original Flare – and QUIET!



Powered By
CREE
LEDs



KASMER
Filter Holder!



Q⁺ Technology– A New Generation of Flare

QUIET! Perfect for stage and studio!

BRIGHT! Over 1000 Watt brightness (in Turbo Mode)

POWERFUL OPTIONS! Three modes for improved performance + full compatibility with earlier generation Flares. Perfect for retrofitting in existing systems.

- Theatre Mode: Quiet, effectively silent operation, 8% brighter
- Turbo Mode: 40% brighter, yet still very quiet!
- The same world class dimming, colors, smoothness, control features, and flicker-free performance
- Calibration mode allows matching of intensity AND COLOR of Flares of all vintages and types

All the Great Features of Flare

SAVINGS! Simultaneous color wash and strobe in ONE fixture – Saves labor, time, space, energy, and cost

SMOOTH! Instantaneous RGBW color mixing with 1200Hz refresh rate – Smooth on-camera dimming

VERSATILE! Pixel-map feature divides into 2, 3, 4, 6, or 12 sections for ultimate control

SATURATED COLORS! Intense, deep reds and blues. Ultra-bright greens. Brilliant camera-friendly whites.

FLEXIBLE! 36-degree beam angle optimized for most applications. 22, 54, & 70-degree available by special order.



FEINER
LICHTTECHNIK

Donaustauerstraße 93 - D-93059 Regensburg - Fon +49(0941)604050 - Fax 604058
info@feiner-lichttechnik.de - www.feiner-lichttechnik.de

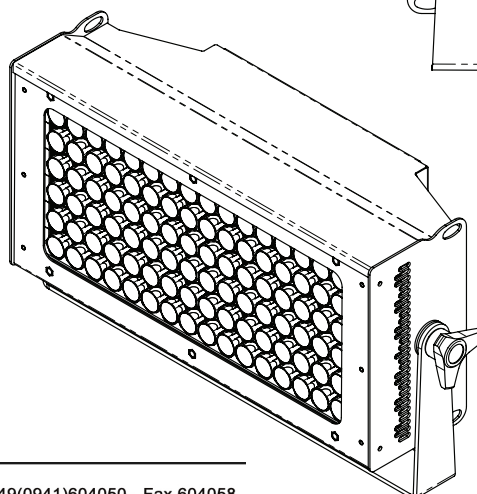
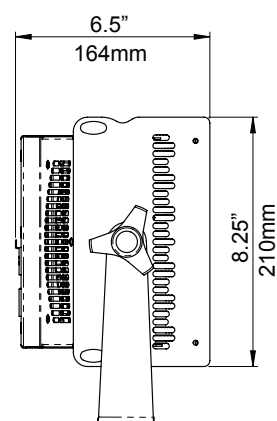
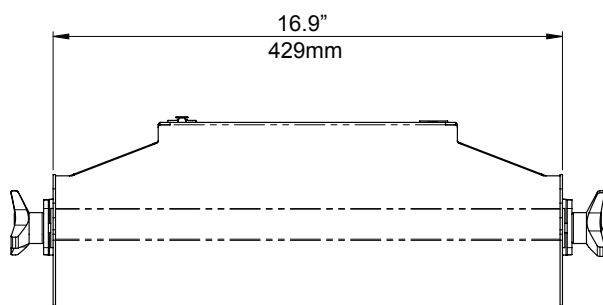
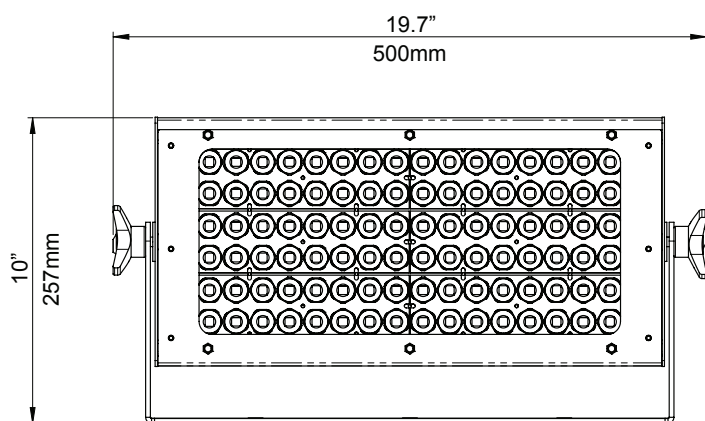


FLARE^{III} Q⁺

SPECIFICATIONS

Light sources	96 10W CREE® LEDs (divided in to 12 segments)
Beam Spread	36°
Colours	4- R, G, B, W
Average colour wavelength (manufacturer rated)	red: 625 nm
	green: 530 nm
	blue: 460 nm
	white: >5700K
Refresh rate	1200 Hz
Intensity control	16-bit or 8-bit
Control	DMX-512, RDM, Demo, Manual mode
AC Power	100-277 VAC Universal Input, 50-60 Hz
Fuse	12A 250V slow-blow (5x20mm)
Cooling	Air cooling + fan
Operating Temperature	-13 °F - +104 °F [-25 °C - +40 °C]
DMX Channels	3-56 depending on control mode
DMX Connectors	Input 5-pin XLR male, Thru 5-pin XLR female
DMX pin configuration	pin 1 shield, pin 2 (data-), pin 3 (data+), pin 4 n/a, pin 5 n/a
Max. power draw	1250 W
Power Connectors	Input PowerCON 20A blue
Fixing	Adjustable yoke
Unit Dimensions (HxWxD)	10 x 19.7 x 6.5 in (257 x 500 x 164 mm)
Shipping Dimensions (HxWxD)	9 x 20.5 x 12.25 in (229 x 521 x 311 mm)
Unit Weight	22 lb (10 kg)
Shipping weight	

Specifications and features are subject to change without notice.



FEINER
LIGHTTECHNIK

Donaustaufferstraße 93 - D-93059 Regensburg - Fon +49(0941)604050 - Fax 604058
info@feiner-lichttechnik.de - www.feiner-lichttechnik.de



FLARE LR Q⁺

The World Famous Flare in Linear Format!



Powered By

CREE 
LEDs

Featuring Flare Q⁺ LED Driver and Cooling Technology™! Delivers an amazing maximum output of 58,000 Lumens – 1.4 times the brightness of the original Flare – and QUIET!

- Famous Flare brightness, colours, control
- Patent Pending Preset Yoke™ included! Innovative indexing function, adjustable in 15-degree increments
- Attachable feet available for floor mounting
- “Theatre” (effectively silent) and “Turbo” (super-bright) modes

All the Great Features of Flare

BRIGHT! World famous Flare brightness. Nothing Brighter!

SATURATED COLOURS! Intense, deep reds and blues. Ultra-bright greens. Brilliant camera-friendly whites.

SMOOTH! Instantaneous RGBW colour mixing with 1200Hz refresh rate – Smooth on-camera dimming

VERSATILE! Pixel-map feature divides into 2, 3, 4, 6, or 12 sections for ultimate control

FLEXIBLE! 36-degree beam angle optimized for most applications. 22, 54, & 70-degree available by special order.

SAVINGS! Simultaneous colour wash, strobe, and blinder in ONE fixture – Saves labor, time, space, energy, and cost



FEINER
LICHTTECHNIK

Donaustaufferstraße 93 - D-93059 Regensburg - Fon +49(0941)604050 - Fax 604058
info@feiner-lichttechnik.de - www.feiner-lichttechnik.de



SPECIFICATIONS

Light sources	108 CREE® XML LEDs (divided in to 12 pixels)
Beam Spread	36°
Colours	4- R, G, B, W
Average colour wavelength (manufacturer rated)	red: 625 nm
	green: 530 nm
	blue: 460 nm
	white: >5700K
Refresh rate	1200 Hz
Intensity control	16bit or 8bit
Control	DMX-512 + RDM
AC Power	100-277 VAC Universal Input, 50/60 Hz
Cooling	active cooling
Operating Temperature	-20°C - +40°C
DMX Channels	3-56 depending on control mode
DMX Connectors	In/Out - XLR5 F/M
Max. power draw	1400 W
Power Connectors	In- PowerCON 20A blue
Fixing	Adjustable yoke
Unit Dimensions (HxWxD)	6.9 x 39.3 x 4.7 in (17.5 x 99.8 x 12 cm) without yoke
Shipping Dimensions (HxWxD)	TBD
Unit Weight	24.3 lb (11 kg)
Shipping weight	TBD

Specifications and features are subject to change without notice.



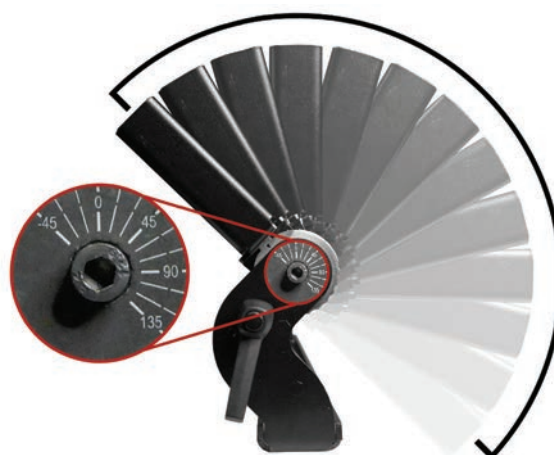
PreSet™ Yoke

Included with fixture

Automatically snaps to 15° increments from -45° to +135°

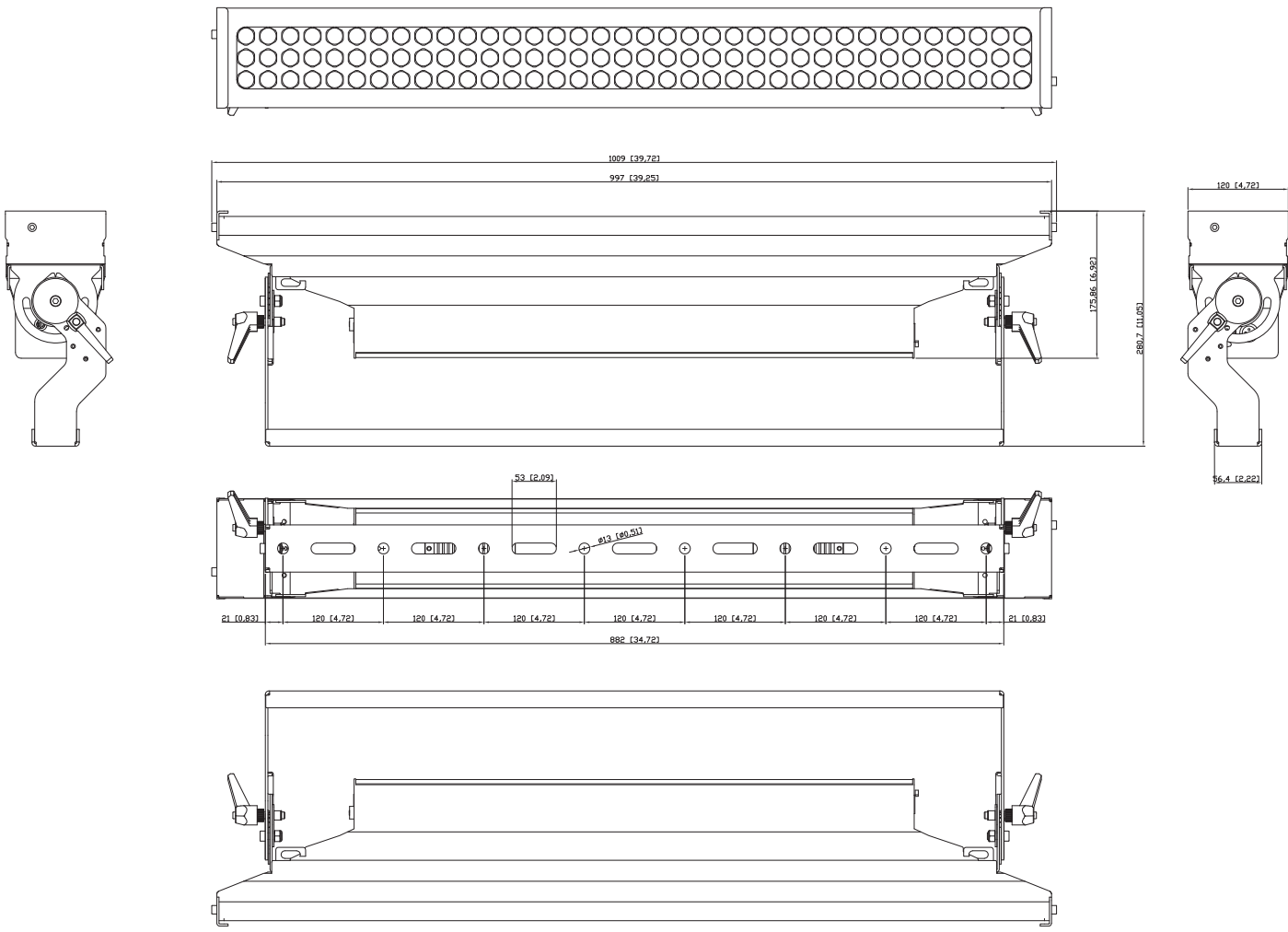
Can also be manually set to any angle in between

Patent Pending



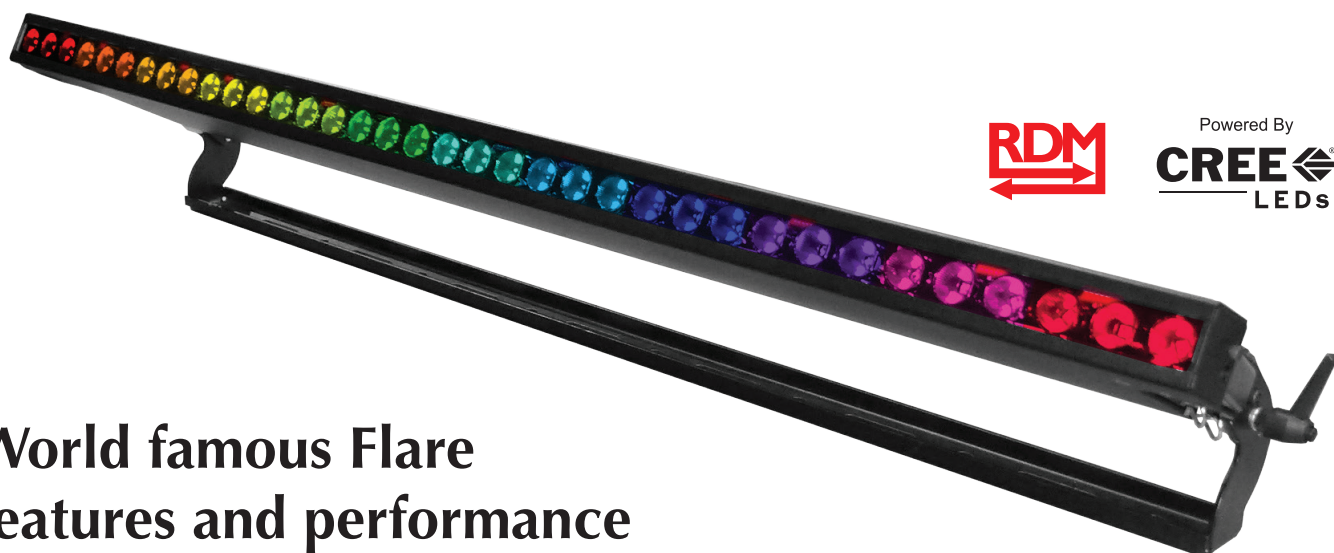
DIMENSIONS

Dimensions in mm [inch]





FLARE RZ Q⁺ Rayzr



Powered By

CREE 
LEDs

World famous Flare
features and performance
in a razor-thin format!

Featuring Q⁺ Technology™

- Famous Flare brightness, colours, control
- Patent Pending Preset Yoke™ included!
Innovative indexing function, adjustable
in 15-degree increments
- Flexible mounting/joining options
available for scenery, truss, pipe, and
floor. Vertically hang coupled units up to
5m in total length!
- “Theatre” (effectively silent) and “Turbo”
(super-bright) modes
- Available in 50 and 100cm lengths

All the Great Features of Flare

BRIGHT! World famous Flare brightness.
Nothing Brighter!

SATURATED COLOURS! Intense, deep
reds and blues. Ultra-bright greens. Brilliant
camera-friendly whites.

SMOOTH! Instantaneous RGBW colour
mixing with 1200Hz refresh rate – Smooth
on-camera dimming

VERSATILE! Pixel-map feature divides into
2, 3, 4, 6, or 12 sections for ultimate control

FLEXIBLE! 36-degree beam angle optimized
for most applications. 22, 54, & 70-degree
available by special order.

SAVINGS! Simultaneous colour wash,
strobe, and blinder in ONE fixture – Saves
labor, time, space, energy, and cost



FEINER
LICHTTECHNIK

Donaustaufferstraße 93 - D-93059 Regensburg - Fon +49(0941)604050 - Fax 604058
info@feiner-lichttechnik.de - www.feiner-lichttechnik.de



SPECIFICATIONS

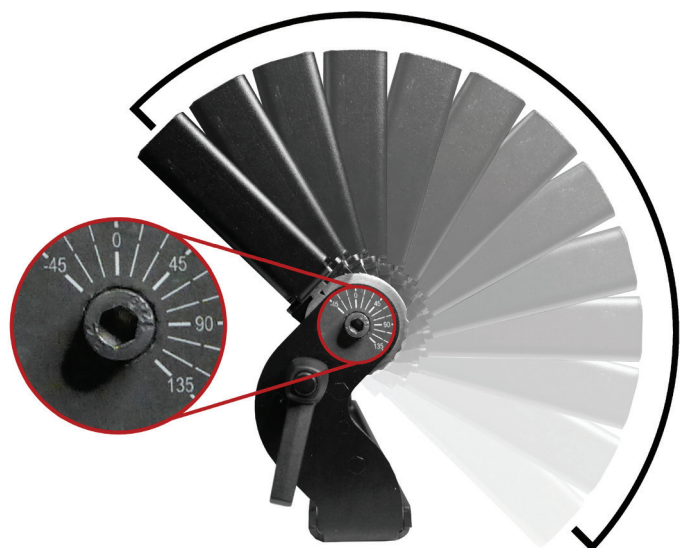
	50 cm	100 cm
Light sources	18 CREE® LEDs (divided in to 6 pixels)	36 CREE® LEDs (divided in to 12 pixels)
Beam Spread	36°	
Colours	4- R, G, B, W	
Average colour wavelength (manufacturer rated)	Red: 625 nm, Green: 530 nm, Blue: 460 nm, White: >5700K	
Refresh rate	1200 Hz	
Intensity control	16-bit or 8-bit	
Control	RDM, DMX-512, Demo, Manual Mode. Light output and fan controlling modes - Turbo (full output), Quiet (theatre mode), Compatible (matches regular Flare);	
AC power	100-277 VAC Universal Input, 50-60 Hz	
Fuse	2A 250V slow-blow (5x20mm)	4A 250V slow-blow (5x20mm)
Cooling	Air cooling + fan	
Operating temperature	-4 °F - +104 °F [-20 °C - +40 °C]	
DMX channels	3-32 depending on control mode	3-56 depending on control mode
DMX connectors	Input 5-pin XLR male, Thru 5-pin XLR female	
DMX pin configuration	pin 1 shield, pin 2 (data-), pin 3 (data+), pin 4 n/a, pin 5 n/a	
Max. power draw	200 W	400 W
Power Connectors	Input PowerCON 20A blue	
Fixing	Adjustable yoke	
Unit Dimensions (LxWxH)	498 x 41 x 201 mm	998 x 41 x 201 mm
Shipping Dimensions (LxWxH)	TBD	TBD
Unit Weight	TBD	TBD
Shipping weight	TBD	TBD

Specifications and features are subject to change without notice.

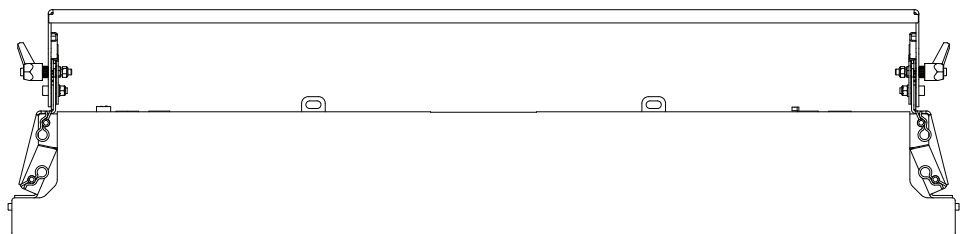
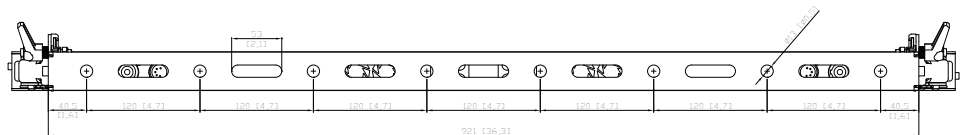
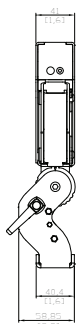
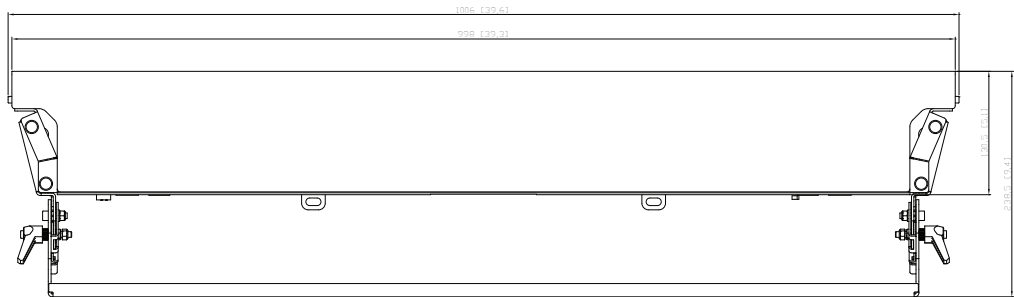
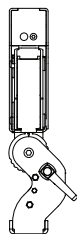
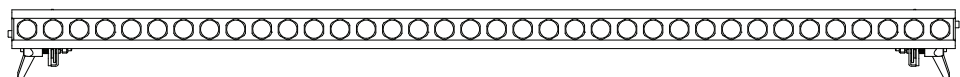
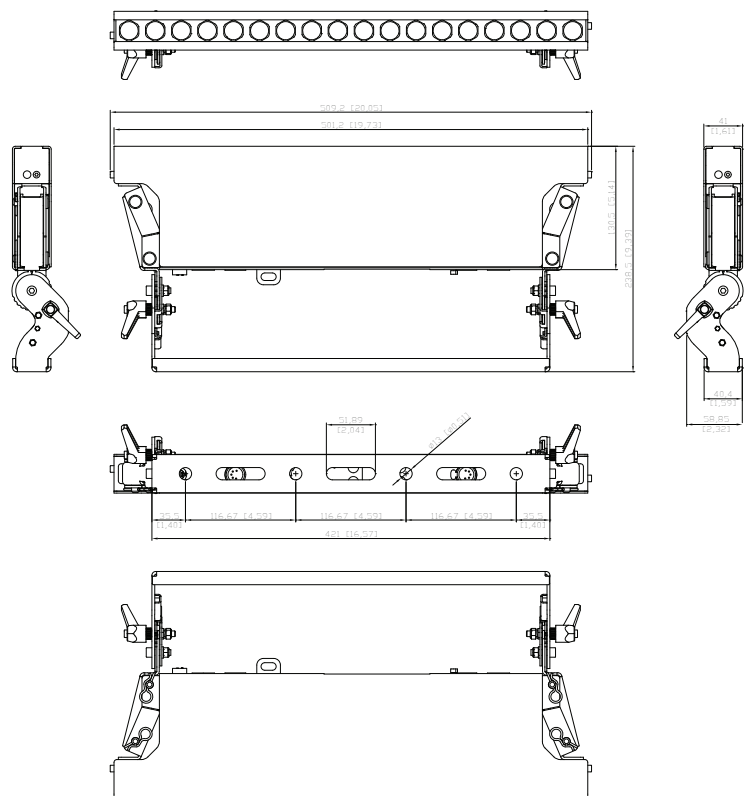
PreSet™ Yoke

Included with fixture

Automatically snaps to 15° increments from -45° to +135°
Can also be manually set to any angle in between
Patent Pending

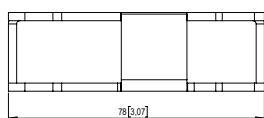
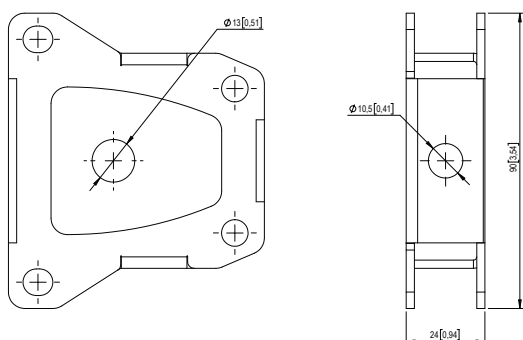


DIMENSIONS Dimensions in mm [Inch]

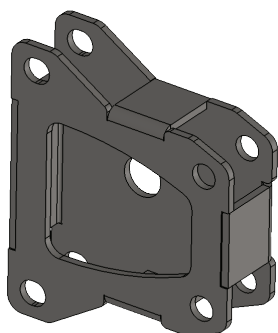


ACCESSORIES Dimensions in mm [Inch]

Rayzr Joining Adapter

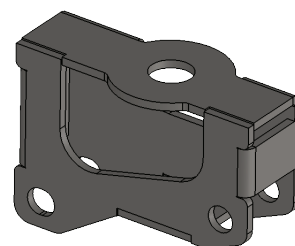
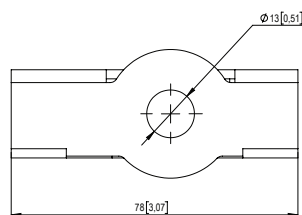
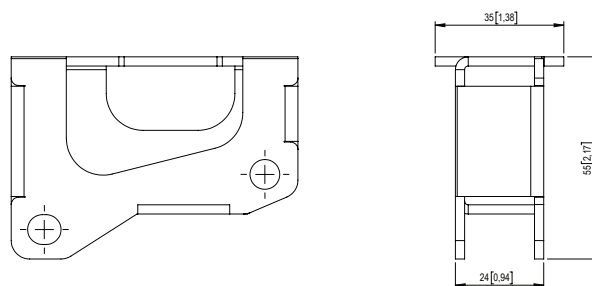


Maximum vertical length for joined Rayzrs is 5 meters



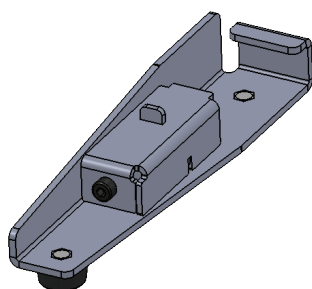
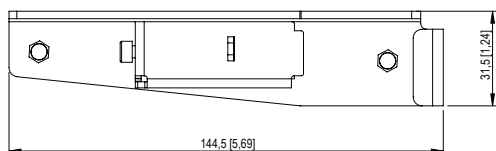
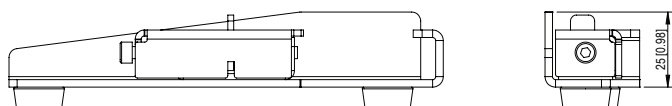
Unit Weight: 0.2 kg [0.44 lb]

Rayzr Hanging Adapter

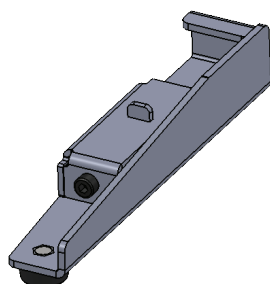


Unit Weight: 0.26 kg [0.57 lb]

Rayzr Attachable Feet



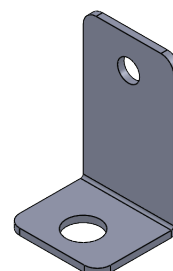
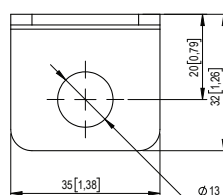
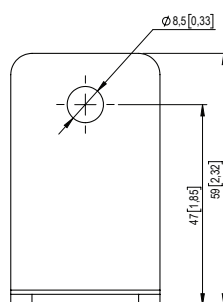
Left



Right

Unit Weight: 0.4 kg [0.88 lb.] per set

Rayzr Scenery Mount



Unit Weight: 0.05 kg [0.11 lb]



Introducing the
Incredible

FLAREJR



Available with
((()))
Wireless Option

Powered By
CREE
LEDs

Little brother of the fabulous
Solaris LED Flare, winner
Live Design 2013 Product
of the Year and PLASA 2013
Sustainability Award



Super Bright
LED RGBW
Wash/Strobe/Blinder

KASMER
Filter Holder!



MORE SAVINGS! Simultaneous colour wash and strobe in ONE fixture – Saves labour, time, space, energy, and cost.

MORE SMOOTH! Instantaneous RGBW colour mixing with 1200Hz refresh rate – Smooth on-camera dimming.

MORE VERSATILE! Pixel-map feature divides into 1, 2, or 4 sections for ultimate control.

MORE SATURATED COLOURS! Intense, deep reds and blues. Ultra-bright greens. Brilliant camera-friendly whites.

MORE FLEXIBLE! 36-degree beam angle optimised for most applications.



FEINER
LICHTTECHNIK

Donaustaufferstraße 93 - D-93059 Regensburg - Fon +49(0941)604050 - Fax 604058
info@feiner-lichttechnik.de - www.feiner-lichttechnik.de

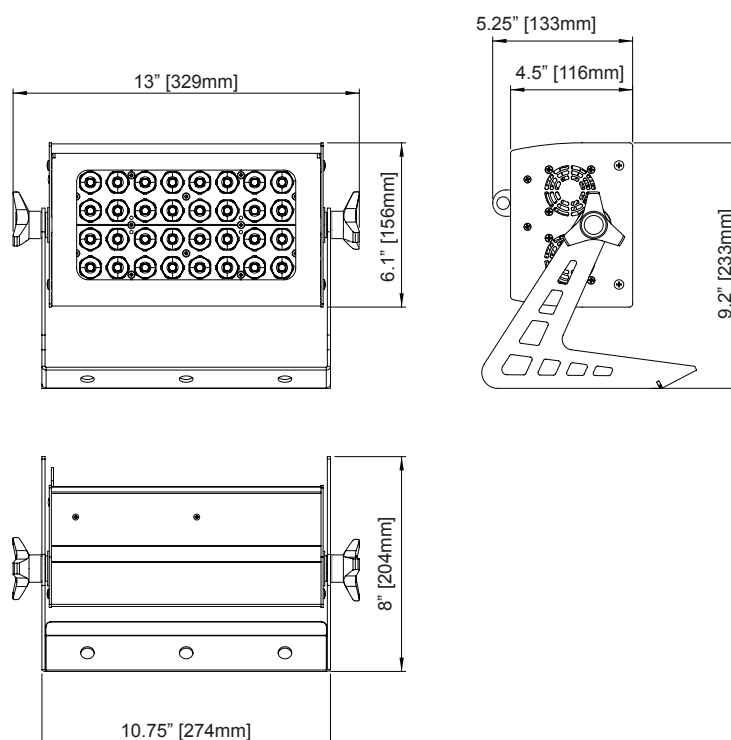


FLARETMJR

SPECIFICATIONS

Light sources	32 10W CREE® LEDs (divided in to 4 pixels)
Beam spread	36°
Colours	4- R, G, B, W
Average colour wavelength (manufacturer rated)	Red: 625 nm
	Green: 530 nm
	Blue: 460 nm
	White: >5700K
Refresh rate	1200 Hz
Intensity control	16-bit or 8-bit
Control	DMX-512
Wireless control	Wireless option available by special order
AC power	90-277 VAC universal input, 50/60 Hz
Cooling	Air-cooled fan
Operating temperature	-20°C - +40°C
DMX channels	3-24 depending on control mode
DMX connectors	In/Out - XLR 5-pin F/M
Max. power draw	~400 W
Power connectors	In- PowerCon 20A blue + THRU- PowerCon grey
Fixing	Adjustable yoke
Fixture body	Powdercoated steel
Unit dimensions (HxWxD)	6.1 x 13.4 x 5.3 in (15.5 x 34 x 13.5 cm)
Shipping dimensions (HxWxD)	TBA
Unit weight	10.6 lb (4.8 kg)
Shipping weight	12 lb (5.4 kg)

Specifications and features are subject to change without notice.





FLARE IP High Reach (HR)

Introducing the Incredible Flare HR

**The Market Leader in Concert Lighting.
Now Coming to a Building Near You!**

**Super Bright, Outdoor LED RGBW
Dual-Head Wash Fixture**

(Single-head and Single-head with remote ballast
also available)

IP Rated for Architectural Installations



Flare IP HR Glare Shields –
Two options available

Powered By
CREE LEDs



The Solaris FLARE IP High Reach (HR) RGBW ultra-high output, long throw fixtures deliver over 27,000 lumens of brightness over long distance! Based on technology proven in the award-winning super-bright Flare stage lighting fixture, Flare IP models offer unprecedented RGBW output per Watt, making it a truly “Green” product.

Flare IP HR features carefully selected lenses, delivering an incredibly smooth and even field. Full RDM implementation provides easy setup and monitoring in a tamper-proof design. High output in a compact design makes Flare IP the most powerful, desirable, outdoor Architectural fixtures available for colour-changing illumination of large structures of all kinds. Silent, passive cooling makes the Flare IP ideal for noise sensitive applications such as theatre and classical concert venues. IP65 rating ensures dependable, long-term use outdoors.

Also available, the Flare IP High Definition (HD) single-head version with 22°, 36°, 54°, and 70° beam width options.

- Incredibly BRIGHT! The HR model delivers over 27,000 lumens with 8° beam width*
- Ultra-long throw! Up to 2200 lux @ 50 ft.; 540 lux @ 100 ft. (subject to change)
- IP65 rated for outdoor use.
- Full RDM functionality for easy monitoring and setup.
- Wireless option!
- RGBW colour-changing illumination with smooth, even field over great distances.
- Intelligent thermal management for the hottest and coolest environments.
- Based on proven technology used in the popular, award-winning Solaris Flare.

* based on preliminary photometric data for dual head HR



FEINER
LICHTTECHNIK

Donaustauerstraße 93 - D-93059 Regensburg - Fon +49(0)941)604050 - Fax 604058
info@feiner-lichttechnik.de - www.feiner-lichttechnik.de



Single Head Specifications	
LED power	575
Total lumen output	14,500
LED light sources	216 CREE®
Native LED colours	RGBW
Pixels per head	1
Beam spread	8°
Refresh rate	1200 Hz
Cooling	Passive
IP Rating	IP65
Operating Temperature	-20° - +40° C

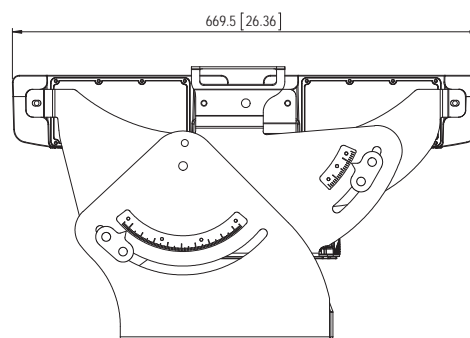
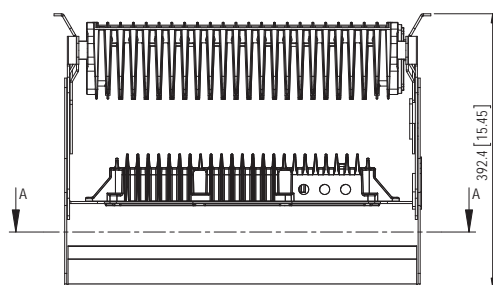
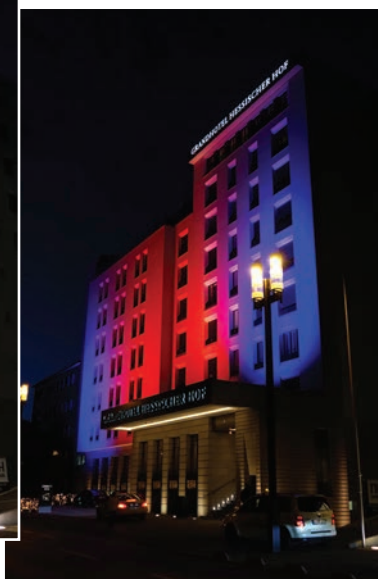
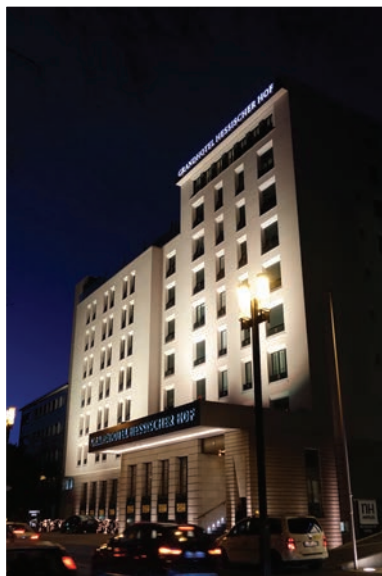
Specifications and features are subject to change without notice.

Dual Head Specifications	
LED power	1150
Total lumen output	29,000
LED light sources	432 CREE®
Native LED colours	RGBW
Pixels per head	1
Beam spread	8°
Refresh rate	1200 Hz
Cooling	Passive
IP Rating	IP65
Operating Temperature	-20° - +40° C

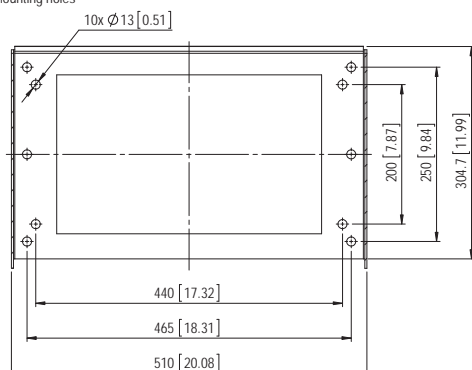
Specifications and features are subject to change without notice.

Base/PSU Specifications	
Control Protocol	DMX 512A + RDM
DMX Channels	4-16
Wireless control	Optional
AC Power	90-277V, 50/60 Hz
DMX connectors	In/Out Hard wired
Power connectors	In Hard wired
Cooling	Passive
IP rating	IP65
Operating Temperature	-20° - +40° C
Width (with head(s))	680 mm [26.8"]
Height (with head(s))	400 mm [15.75"]
Depth (with head(s))	550 mm [21.7"]
Weight (Single head)	34 kg [75 lb]
Weight (Dual head)	50 kg [110 lb]
Remote Ballast Weight	8 kg [17.6 lb]
Egg-crate Louvre Weight	5 kg [11 lb]

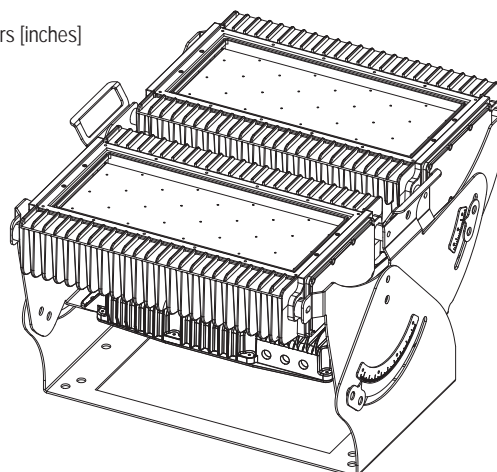
Specifications and features are subject to change without notice.



SECTION A-A
Mounting holes

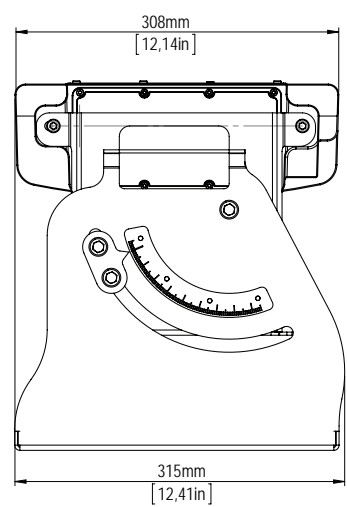
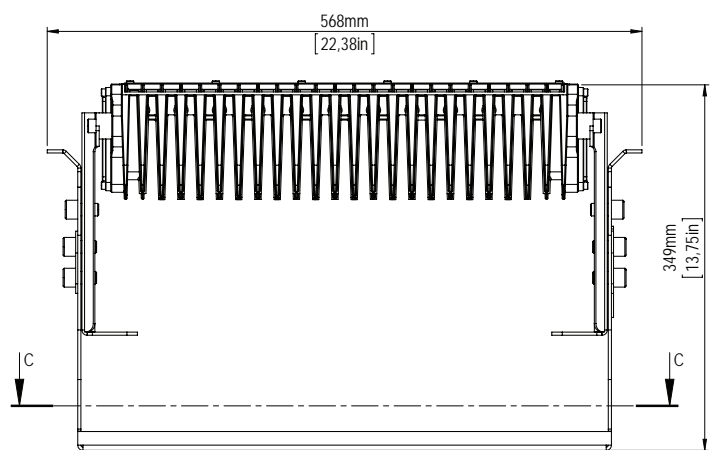


Dimensions in millimeters [inches]

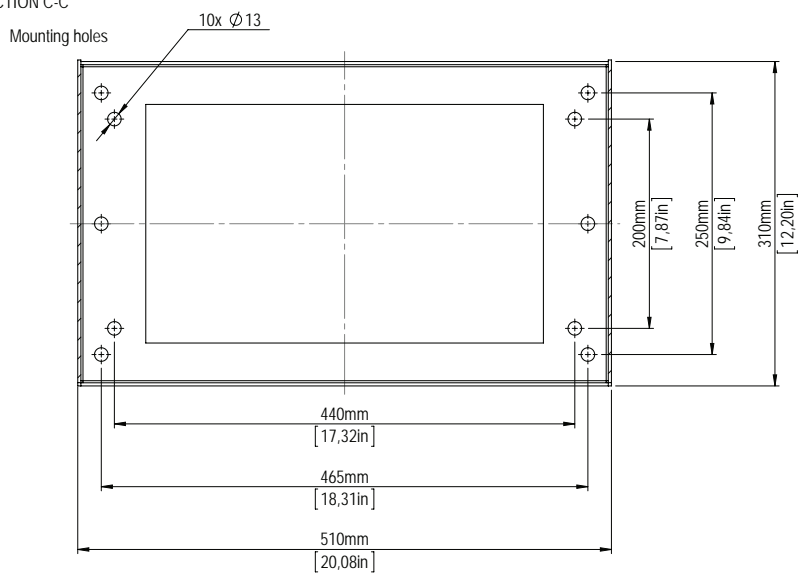


Remote Ballast Configuration

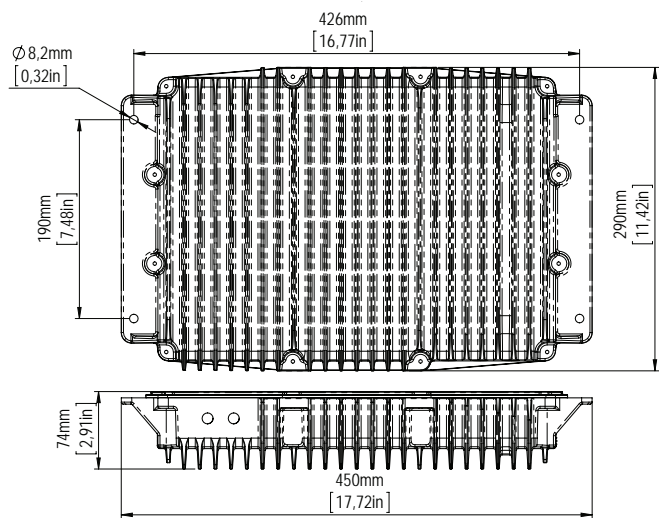
Single Head Only



SECTION C-C

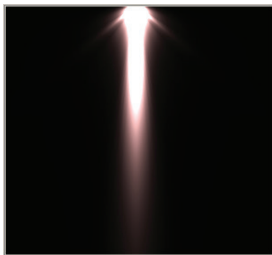
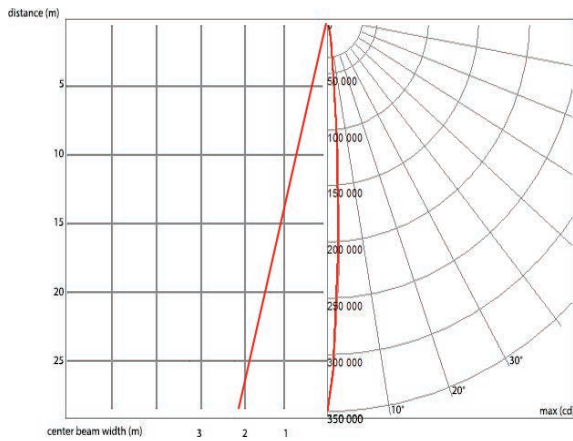


Dimensions in millimeters [inches]

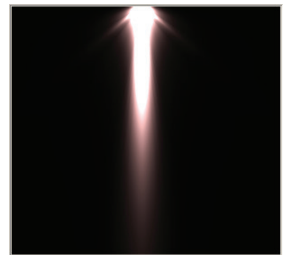
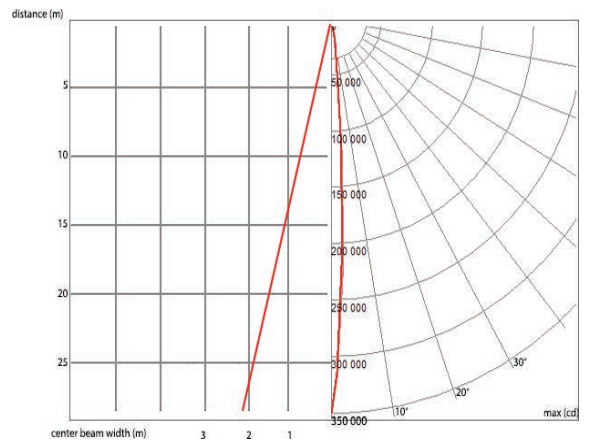


IES Photometric Data

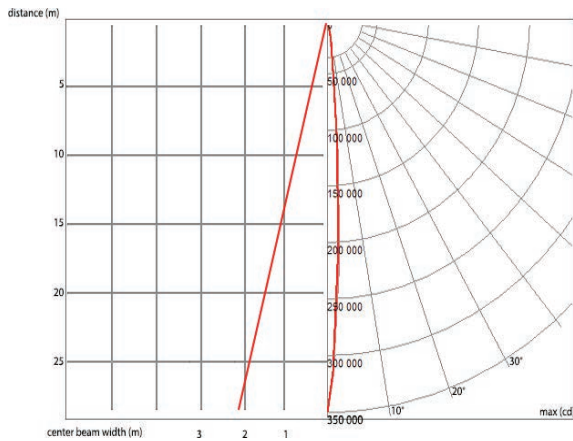
8° Single Head HR



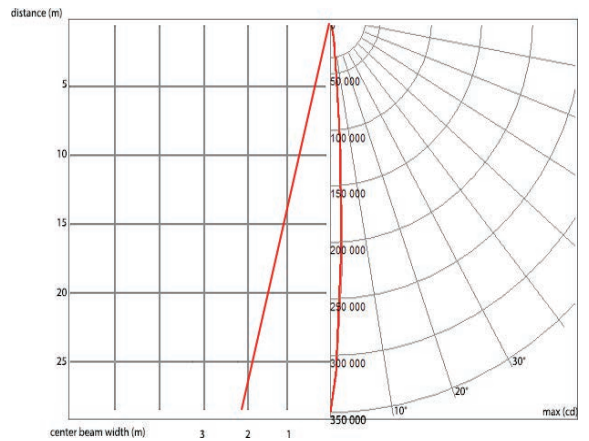
Red



Green



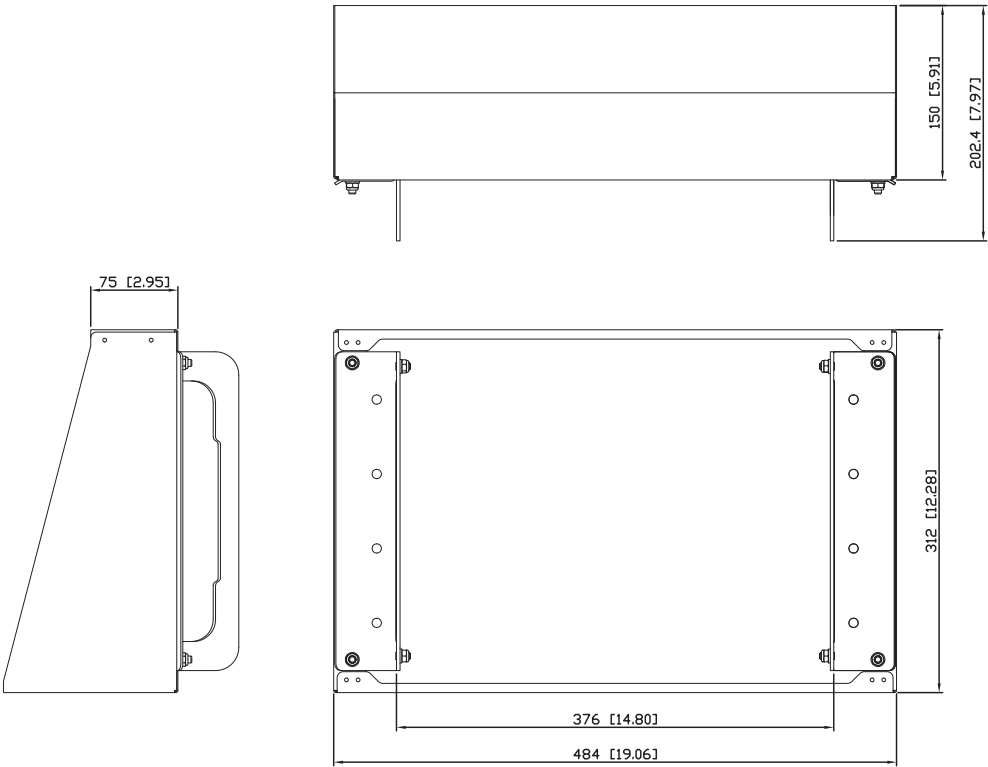
Blue



White

	8°		
	Candela	Lumens	Power
Red	52583 cd	2037 lm	132 W
Green	99169 cd	4410 lm	167 W
Blue	17192 cd	739 lm	170 W
White	177165 cd	6766 lm	166 W
Totals (Max.)	346109 cd	13952 lm	575 W

Flare IP HR Glare Shields



Dimensions in millimeters [inches]

