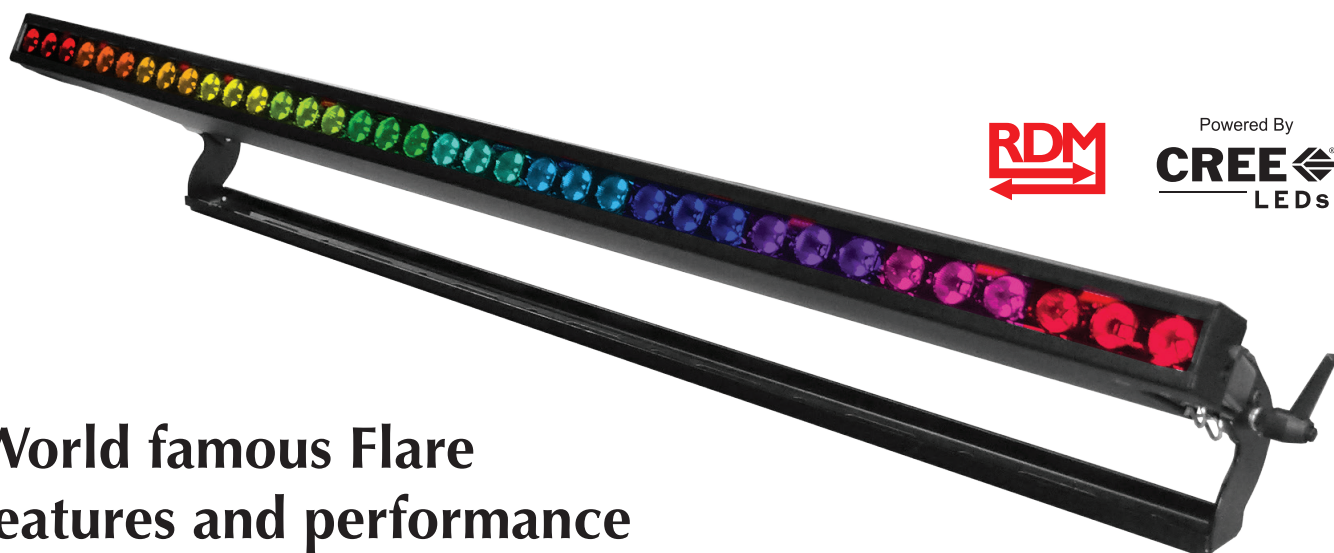




FLARE RZ Q⁺ Rayzr



Powered By

CREE 
LEDs

World famous Flare
features and performance
in a razor-thin format!

Featuring Q⁺ Technology™

- Famous Flare brightness, colours, control
- Patent Pending Preset Yoke™ included!
Innovative indexing function, adjustable
in 15-degree increments
- Flexible mounting/joining options
available for scenery, truss, pipe, and
floor. Vertically hang coupled units up to
5m in total length!
- “Theatre” (effectively silent) and “Turbo”
(super-bright) modes
- Available in 50 and 100cm lengths

All the Great Features of Flare

BRIGHT! World famous Flare brightness.
Nothing Brighter!

SATURATED COLOURS! Intense, deep
reds and blues. Ultra-bright greens. Brilliant
camera-friendly whites.

SMOOTH! Instantaneous RGBW colour
mixing with 1200Hz refresh rate – Smooth
on-camera dimming

VERSATILE! Pixel-map feature divides into
2, 3, 4, 6, or 12 sections for ultimate control

FLEXIBLE! 36-degree beam angle optimized
for most applications. 22, 54, & 70-degree
available by special order.

SAVINGS! Simultaneous colour wash,
strobe, and blinder in ONE fixture – Saves
labor, time, space, energy, and cost



FEINER
LICHTTECHNIK

Donaustauerstraße 93 - D-93059 Regensburg - Fon +49(0)941)604050 - Fax 604058
info@feiner-lichttechnik.de - www.feiner-lichttechnik.de



SPECIFICATIONS

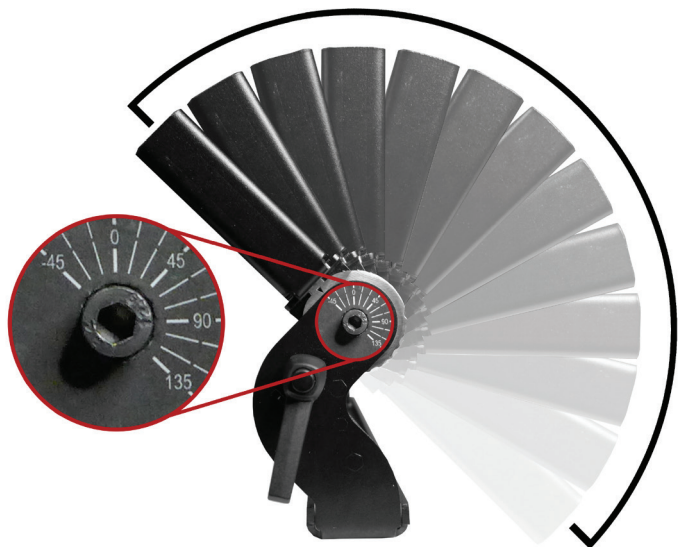
	50 cm	100 cm
Light sources	18 CREE® LEDs (divided in to 6 pixels)	36 CREE® LEDs (divided in to 12 pixels)
Beam Spread	36°	
Colours	4- R, G, B, W	
Average colour wavelength (manufacturer rated)	Red: 625 nm, Green: 530 nm, Blue: 460 nm, White: >5700K	
Refresh rate	1200 Hz	
Intensity control	16-bit or 8-bit	
Control	RDM, DMX-512, Demo, Manual Mode. Light output and fan controlling modes - Turbo (full output), Quiet (theatre mode), Compatible (matches regular Flare);	
AC power	100-277 VAC Universal Input, 50-60 Hz	
Fuse	2A 250V slow-blow (5x20mm)	4A 250V slow-blow (5x20mm)
Cooling	Air cooling + fan	
Operating temperature	-4 °F - +104 °F [-20 °C - +40 °C]	
DMX channels	3-32 depending on control mode	3-56 depending on control mode
DMX connectors	Input 5-pin XLR male, Thru 5-pin XLR female	
DMX pin configuration	pin 1 shield, pin 2 (data-), pin 3 (data+), pin 4 n/a, pin 5 n/a	
Max. power draw	200 W	400 W
Power Connectors	Input PowerCON 20A blue	
Fixing	Adjustable yoke	
Unit Dimensions (LxWxH)	498 x 41 x 201 mm	998 x 41 x 201 mm
Shipping Dimensions (LxWxH)	TBD	TBD
Unit Weight	TBD	TBD
Shipping weight	TBD	TBD

Specifications and features are subject to change without notice.

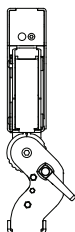
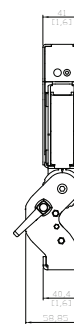
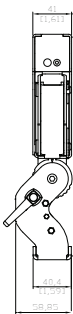
PreSet™ Yoke

Included with fixture

Automatically snaps to 15° increments from -45° to +135°
Can also be manually set to any angle in between
Patent Pending

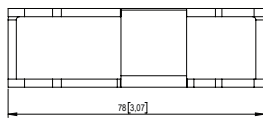
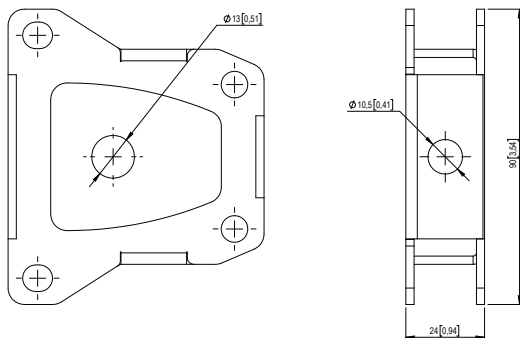


Dimensions in mm [Inch]

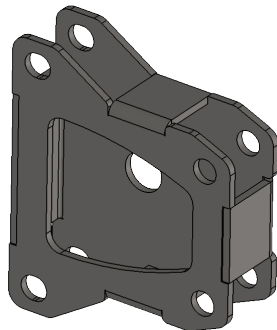


ACCESSORIES Dimensions in mm [Inch]

Rayzr Joining Adapter

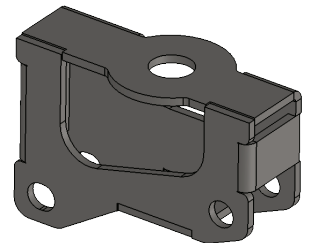
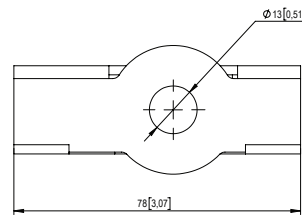
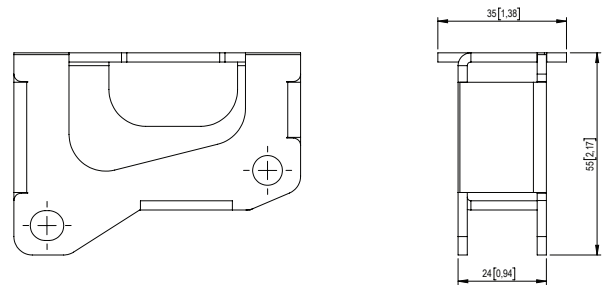


Maximum vertical length for joined Rayzrs is 5 meters



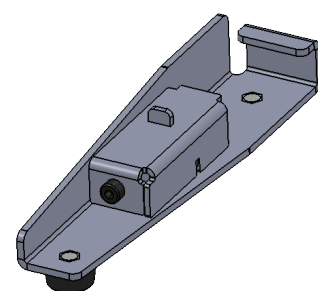
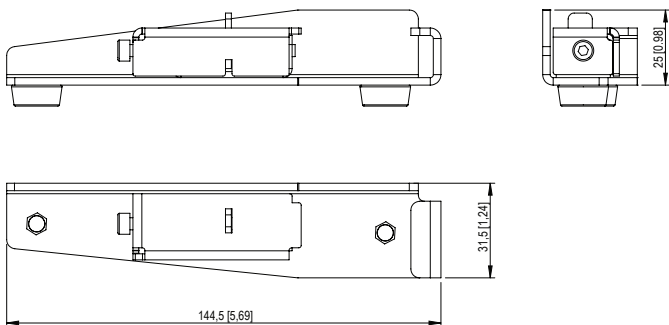
Unit Weight: 0.2 kg [0.44 lb]

Rayzr Hanging Adapter

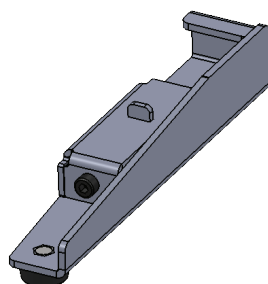


Unit Weight: 0.26 kg [0.57 lb]

Rayzr Attachable Feet



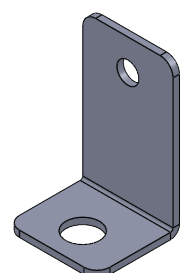
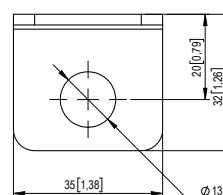
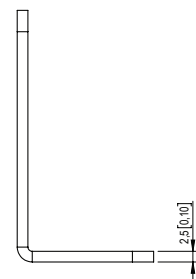
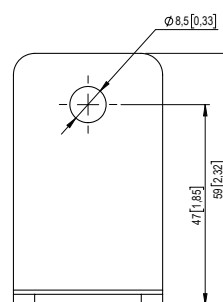
Left



Right

Unit Weight: 0.4 kg [0.88 lb.] per set

Rayzr Scenery Mount



Unit Weight: 0.05 kg [0.11 lb]